



# PSE10M SL ♦ PSE10 SL

## Electric walkie stacker with straddle legs 1000 kg maximum load capacity

### DESCRIPTION

PSE10M SL and PSE10 SL are electric walkie stackers with a rated load capacity of 1000 kg and a lifting height ranging between 1600 and 3500 mm.

Its compact and light design suits a variety of light-duty warehouse operations.

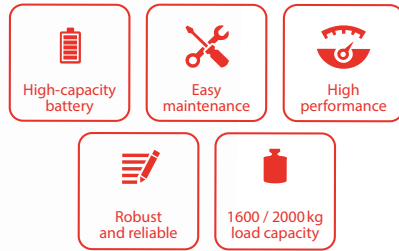
### FEATURES

- Ideal solution for light-duty operations
- Built-in charger for greater ease of use
- Low battery indicator with auto cut-off function for an extended lifetime
- Three points of contact design and centered steering system to enhance visibility (PSE10M SL)
- Robust and proven design

SINGLE  
MAST

CENTRAL  
HANDLE

PSE10M SL



### Available in option

- Adjustable straddle legs to maneuver any type of pallet and ensure greater stability
- FEM Fork carriage



### Built-in charger

The built-in charger allows charging the battery anywhere in the work zone.



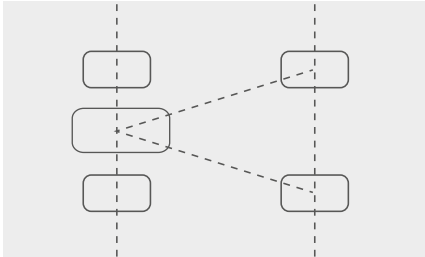
### Ergonomic and robust

Its robust and ergonomic handle, steel crankcase, and plastic coating ensure reliability and comfort.



### Battery discharge protection

It includes a water-resistant and ergonomic emergency stop switch with a low battery indicator. The automatic battery protection guarantees an extended lifetime.



### Stability

Three points of contact for better traction and two stabilizer casters for greater safety.



### Robust and profiled mast

Perfect stability, precision and durability guaranteed by a robust and profiled mast.



### Powerful battery

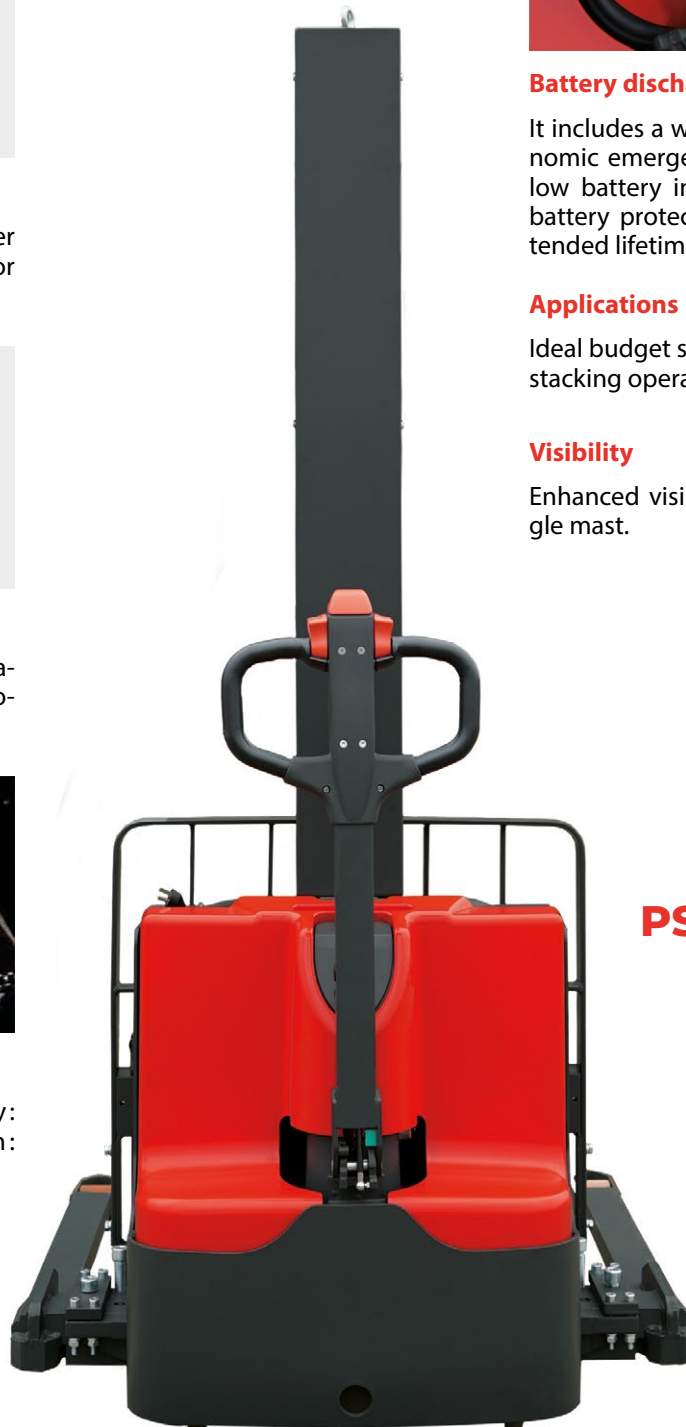
Powerful maintenance-free battery: 2x12Vx85Ah (available in option: 2x12Vx 106Ah).

### Applications

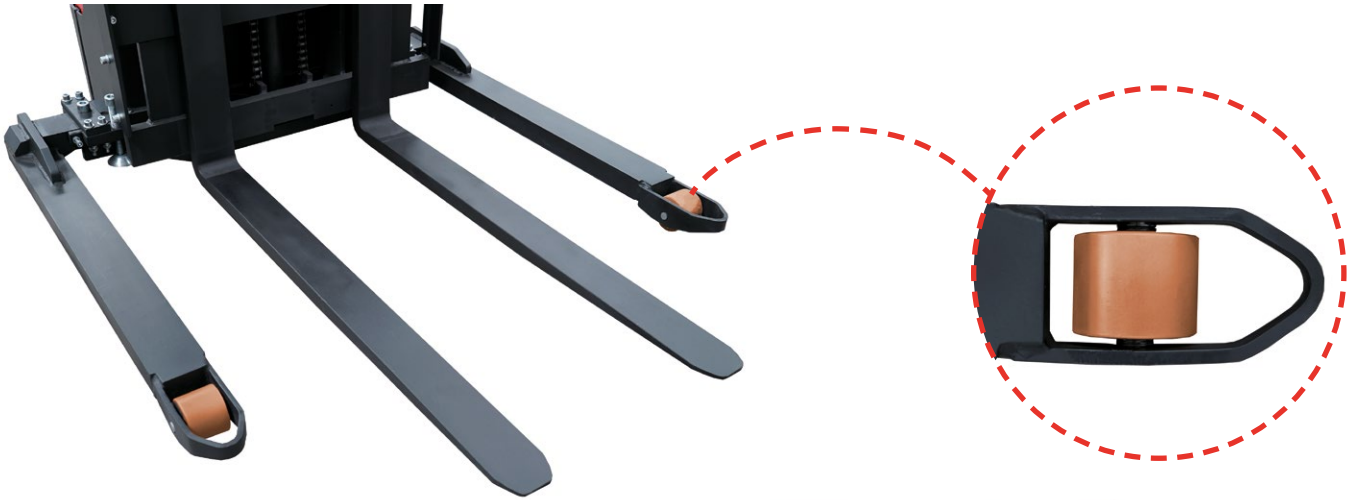
Ideal budget solution for all light-duty stacking operations.

### Visibility

Enhanced visibility thanks to the single mast.



**PSE10M SL**



### Adjustable straddle legs

Adjustable straddle legs for different pallet sizes and enhanced stability.

### Different mast options

- PSE10MSL: single mast for 1600 and 2000 mm lifting height
- PSE10SL: standard duplex mast for 2500, 3200 and 3500mm lifting height

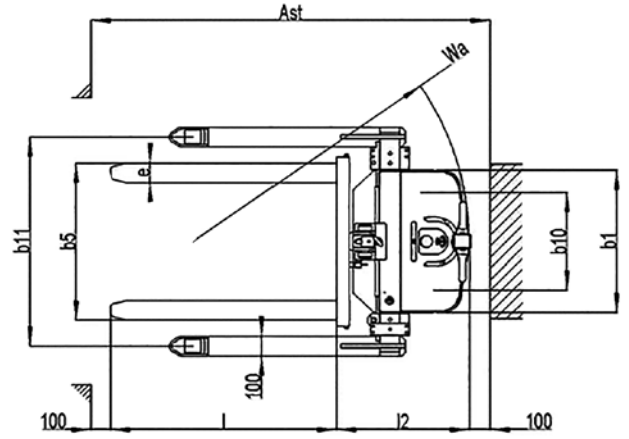
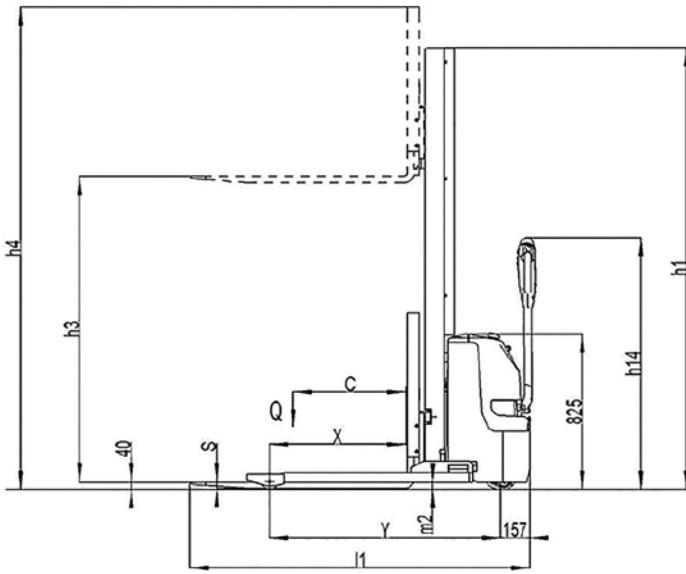
**STANDARD  
MAST**

**PSE10 SL**

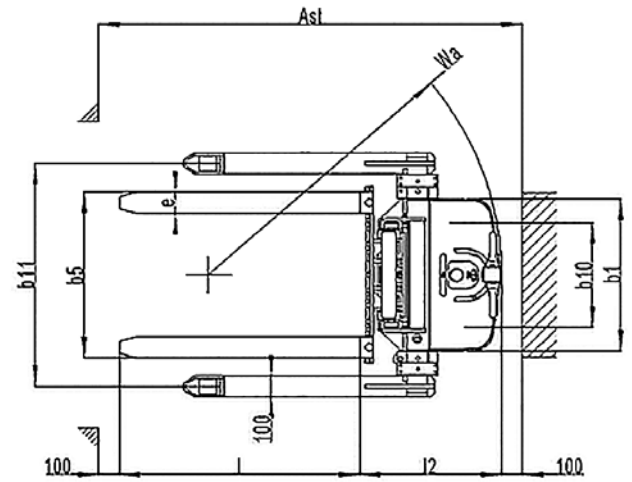
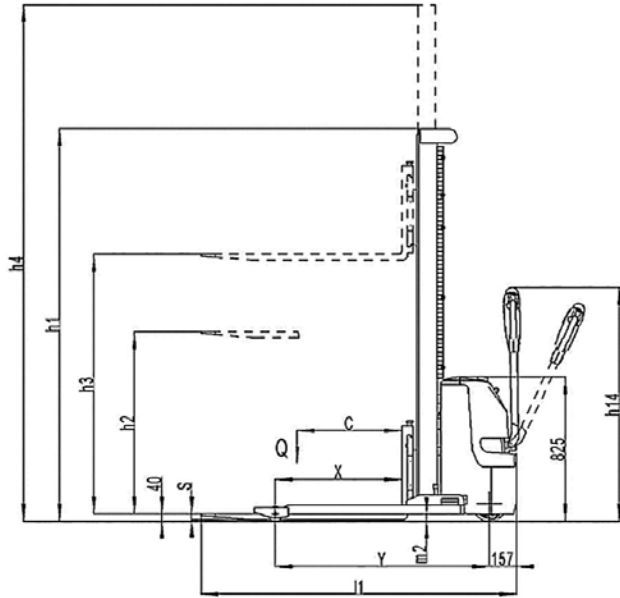


Technical data according to VDI 2198 regulation					
Specifications	1.2	Product Reference ♦ Model		PSE10MSL1600	PSE10MSL2000
	1.3	Power supply		battery	battery
	1.4	Operator type		pedestrian	pedestrian
	1.5	Load Capacity	Q(t)	1	1
	1.6	Load center distance	c(mm)	600	600
	1.8	Distance from carriage to caster axle	x(mm)	732	732
	1.9	Wheelbase	y(mm)	1228	1228
Weight	2.1	Weight (batteries included)	kg	637	650
	2.2	Axle load laden front/rear	kg	518/1111	522/1120
	2.3	Axle load unladen front/rear	kg	452/185	461/189
Wheels	3.1	Wheels		polyurethane (PU)	
	3.2	Steering wheel dimensions	Øxw(mm)	Ø200x73	Ø200x73
	3.3	Load rollers dimensions	Øxw(mm)	Ø84x70	Ø84x70
	3.4	Stabilizing rollers dimensions	Øxw(mm)	Ø80x30	Ø80x30
	3.5	Number of front/rear wheels (x=driving wheel)		1x+2/2	1x+2/2
	3.6	Front axle wheelbase	b10(mm)	498	498
	3.7	Load roller wheelbase	b11(mm)	1070/1370	1070/1370
Dimensions	4.2	Mast lowered height	h1(mm)	1950	2350
	4.3	Free lift	h2(mm)	1530	1930
	4.4	Standard lift	h3(mm)	1530	1930
	4.5	Mast raised height	h4(mm)	2470	2870
	4.9	Tiller height in drive position min/max	h14(mm)	825/1250	825/1250
	4.15	Fork lowered height	h13(mm)	40	40
	4.19	Overall length	l1(mm)	1810	1810
	4.20	Front axle to fork face length	l2(mm)	660	660
	4.21	Overall width	b1(mm)	726	726
	4.22	Fork dimensions	s/e/l(mm)	35/100/1150	35/100/1150
	4.25	Width across forks	b5(mm)	252/800	252/800
	4.32	Ground clearance	m2(mm)	40	40
	4.33	Aisle width for 1000x1200mm pallets crossways	Ast(mm)	2262	2262
4.34	Aisle width for 800x1200mm pallets lengthways	Ast(mm)	2221	2221	
4.35	Turning radius	Wa(mm)	1405	1405	
Performances	5.1	Travel speed, laden/unladen	km/h	3,7/4	3,7/4
	5.2	Lift speed, laden/unladen	mm/s	120/180	120/180
	5.3	Lowering speed, laden/unladen	mm/s	120/160	120/160
	5.10	Service brake		electromagnetic	
Electrical system	6.1	Drive motor rating S2 60min	kW	0,45	0,45
	6.2	Lift motor rating at S3 15%	kW	2,2	2,2
	6.3	Battery acc. to DIN 43531 / 35 / 36 A, B, C, No		no	no
	6.4	Battery voltage, nominal capacity K5	V/Ah	2x12/ 85	2x12/ 85
	6.5	Battery weight	kg	2x25	2x25
	6.6	Energy consumption acc. to VDI cycle	kWh/h	0,62	0,62
Additional data	8.1	Type of drive control		DC - speed control	
	8.4	Noise level at driver's ear acc. to EN12053	dB(A)	<69	<69

## PSE10MSL



## PSE10 SL



Technical data according to VDI 2198 regulation						
Specifications	1.2	Product Reference ♦ Model		PSE10SL2900	PSE10SL3200	PSE10SL3500
	1.3	Power supply		battery	battery	battery
	1.4	Operator type		pedestrian		
	1.5	Load Capacity	Q(t)	1	1	1
	1.6	Load center distance	c(mm)	600	600	600
	1.8	Distance from carriage to caster axle	x(mm)	725	725	725
	1.9	Wheelbase	y(mm)	1228	1228	1228
Weight	2.1	Weight (batteries included)	kg	722	737	752
	2.2	Axle load laden front/rear	kg	577/1138	582/1148	587/1158
	2.3	Axle load unladen front/rear	kg	513/219	523/214	533/219
Wheels	3.1	Wheels		polyurethane (PU)		
	3.2	Steering wheel dimensions	Øxw(mm)	Ø200x73	Ø200x73	Ø200x73
	3.3	Load rollers dimensions	Øxw(mm)	Ø84x70	Ø84x70	Ø84x70
	3.4	Stabilizing rollers dimensions	Øxw(mm)	Ø80x30	Ø80x30	Ø80x30
	3.5	Number of front/rear wheels (x=driving wheel)		1x+2/2	1x+2/2	1x+2/2
	3.6	Front axle wheelbase	b10(mm)	498	498	498
	3.7	Load roller wheelbase	b11(mm)	1070/1370	1070/1370	1070/1370
Dimensions	4.2	Mast lowered height	h1(mm)	1945	2095	2245
	4.3	Free lift	h2(mm)	70	70	70
	4.4	Standard lift	h3(mm)	2840	3140	3440
	4.5	Mast raised height	h4(mm)	3420	3720	4020
	4.9	Tiller height in drive position min./max	h14(mm)	825/1250	825/1250	825/1250
	4.15	Fork lowered height	h13(mm)	40	40	40
	4.19	Overall length	l1(mm)	1810	1810	1810
	4.20	Front axle to fork face length	l2(mm)	660	660	660
	4.21	Overall width	b1(mm)	726	726	726
	4.22	Fork dimensions	s/e/l(mm)	35/100/1150	35/100/1150	35/100/1150
	4.25	Width across forks	b5(mm)	252/800	252/800	252/800
	4.32	Ground clearance	m2(mm)	40	40	40
	4.33	Aisle width for 1000x1200mm pallets crossways	Ast(mm)	2251	2251	2251
4.34	Aisle width for 800x1200mm pallets lengthways	Ast(mm)	2200	2200	2200	
4.35	Turning radius	Wa(mm)	1405	1405	1405	
Performances	5.1	Travel speed, laden/unladen	km/h	3,9/4,1	3,9/4,1	3,9/4,1
	5.2	Lift speed, laden/unladen	mm/s	105/145	105/145	105/145
	5.3	Lowering speed, laden/unladen	mm/s	102/103	102/103	102/103
	5.10	Service brake		electromagnetic		
Electrical system	6.1	Drive motor rating S2 60 min	kW	0,45	0,45	0,45
	6.2	Lift motor rating at S3 15%	kW	2,2	2,2	2,2
	6.3	Battery acc. to DIN 43531 / 35 / 36 A, B, C, No		no	no	no
	6.4	Battery voltage, nominal capacity K5	V/Ah	2x12/85	2x12/85	2x12/85
	6.5	Battery weight	kg	2x25	2x25	2x25
	6.6	Energy consumption acc. to VDI cycle	kWh/h	0,62	0,62	0,62
Additional data	8.1	Type of drive control		DC - speed control		
	8.4	Noise level at driver's ear acc. to EN12053	dB(A)	<69	<69	<69

# RESIDUAL CAPACITY

SX ♦ Single

DX ♦ Duplex

TX ♦ Triplex

SL ♦ Straddle legs

FFL ♦ Full free lift

LI ♦ Initial lift

LP ♦ Proportional lift

DA ♦ Electrical power steering

SC ♦ Built-in weighing scale

CP ♦ Pin code

## PSE10 SL ♦ PP. 92 TO 97

PSE10SL2900

PSE10SL3200

PSE10SL3500



PSE10SL2900

h3 (mm)	Q (kg)	
2900	1000	800
2500	1000	800
2000	1000	1000
cdg (mm) 600 700		

PSE10SL3200

h3 (mm)	Q (kg)	
3200	800	600
2900	1000	800
2500	1000	800
2000	1000	1000
cdg (mm) 600 700		

PSE10SL3500

h3 (mm)	Q (kg)	
3500	600	500
3200	800	600
2900	1000	800
2500	1000	800
2000	1000	1000
cdg (mm) 600 700		