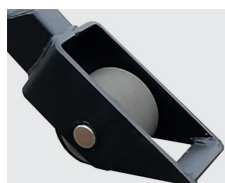


# HB1056EN ♦ HB1068EN

## Electric scissor lift pallet truck 1000 kg maximum load capacity

### FEATURES

- Two rear stabilizing bars prevent the unit from moving when lift height reaches 400mm for excellent stability
- Handy, robust and effective
- A monocylinder hydraulic pump offers great operating flexibility, easier lift and long durability
- The high frame provides better user protection
- Minimum pumping effort
- German pump seals
- Lowering pedal
- The cylinder head is connected to a ball bearing for maximum flexibility



Wide caster stabilizers



Key starter



Anti-crush function



Protected hydraulic system



Reinforced chassis



Fork width 685mm valid on order for models HB1056EN1500, HB1056EN1800 and HB1056EN2000

Specifications	Product Reference ♦ Model		HB1056EN	HB1056EN1500	HB1056EN1800	HB1056EN2000	HB1068EN
	Capacity	kg	1000	1000	1000	1000	1000
Weight	Weight without / with battery	kg	132/159	153/155	179/180,5	187,5/189	137/164
Wheels	Casters	mm	Ø75x75	Ø75x75	Ø75x75	Ø75x75	Ø75x75
	Steering wheel	mm	Ø180x50	Ø180x50	Ø180x50	Ø180x50	Ø180x50
Dimensions	Fork raised height	mm	800	800	800	800	800
	Fork lowered height	mm	85	85	85	85	85
	Fork length	mm	1190	1500	1800	2000	1190
	Width across forks	mm	540	540	540	540	685
	Fork width	mm	160	162	162	162	160
Electric motor	Battery	V/Ah	12/70	12/56	12/56	12/56	12/70
	Built-in charger	Ah/V	6/12	6/12	6/12	6/12	6/12