

**ELECTRIC ALUMINUM STAIR CLIMBER**

250 kg

**DMEG250**

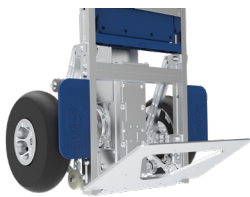
- 250 kg capacity
- Fully foldable, height 1590 mm
- Adjustable, tilting handle
- Fold-down aluminium mud flap
- Aluminium chassis with IP 54 drive unit
- Quick-connect battery system
- Fitted as standard with polypropylene as standard
- Supplied with puncture-proof wheels
- Supplied with charger, battery and retaining strap



Removable lithium battery



Tilt handle, 360° swivel



Folding nose plate



Equipped with a brake

Model		DMEG250
Load capacity	kg	250
Overall dimensions (W x D x H)	mm	545x540x1590
Dimensions folded (W x D x H)	mm	545x308x1197
Nose plate dimensions (L x D)	mm	400x240
Climbing speed	min	22-30 steps
Battery type		lithium
Battery voltage	V/Ah	48/10
Battery weight	kg	3,2
Charging time	h	3
Alimentation	V	100-240
Noise Level	db	< 70
Weight	kg	28,2



**OPTIONS AND ACCESSORIES FOR DMEG170, DMEG170-R, DMEG200 AND DMEG250**



**B-00163**

Auxillary handle bar

- Weight: 0,51 kg
- Dimensions: 345x205 mm



**B-1-00004**

Extension device

- Weight: 1,2 kg
- Dimensions: 120x42x400 mm



**B-1-00446**

Widen fixture

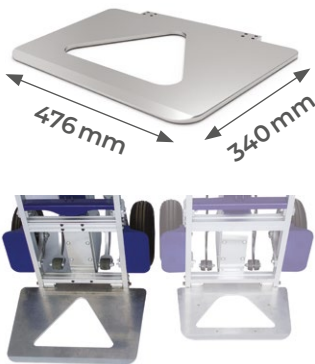
- Weight: 2 kg
- Dimensions: 180x40x800 mm



**B-00208**

Feighten fixture

- Weight: 1,9 kg
- Dimensions: 340x40x611,5 mm
- Three heights: 1958/2015/2072 mm



**B-1-00166**

Extra loading board

- Weight: 2,7 kg
- Dimensions: 476x340 mm
- Load capacity: 200 kg



**A-3-00021**

Cylinder device single

- Weight: 1 kg
- Dimensions: 390x90x125 mm
- Ø bottle: 50 à 500 mm



**B-1-00015**

Cylinder device double

- Weight: 1,8 kg
- Dimensions: 560x90x125 mm
- Ø bottle: 50 to 300 mm



**A-3-00002**

Ground support device

- Weight: 5 kg
- Dimensions: 505x660x225 mm
- Load capacity: 170 kg



**B-1-00033**

Adjustable stairs three stairs

- Weight: 13 kg
- Width: 730 mm
- Min/max height: 285/655 mm
- Load capacity: 250 kg of which operator weight



**B-1-00327**

Adjustable stairs four stairs

- Weight: 17 kg
- Width: 730 mm
- Min/max height: 370/855 mm
- Load capacity: 250 kg of which operator weight



**B-1-00331**

Adjustable stairs five stairs

- Weight: 24 kg
- Width: 740 mm
- Min/max height: 490/1100 mm
- Load capacity: 250 kg of which operator weight



**B-1-00188**

Adjustable stairs six stairs

- Weight: 28 kg
- Width: 740 mm
- Min/max height: 550/1340 mm
- Load capacity: 250 kg of which operator weight

## OPTIONS AND ACCESSORIES FOR DMEG170, DMEG170-R, DMEG200 AND DMEG250



### B-1-00031

Storage box holder

- Weight : 0,22 kg
- Dimensions: 53 x 88 x 85,5 mm



### B-1-00085

Barrel fixture

- Weight : 0,61 kg
- Dimensions: 420 x 106 x 106 mm
- Load capacity : 120 kg



### B-1-00068

Chair delivery

- Weight : 1,5 kg
- Inside width min / max : 206 / 384 mm
- Fork length : 322 mm
- Load capacity : 60 kg



### B-1-00408

Iron support wheel

- Weight : 2,5 kg
- Dimensions: 500 x 100 x 255 mm
- Load capacity : 200 kg



### B-1-00013

Bucket device

- Weight : 5,62 kg
- Dimensions: 407 x 508 x 1375 mm
- Maximum cylinder Ø: 270 mm (± 5 mm)
- Maximum capacity: 6 cylinders



### A-1-00026

Door delivery device

- Weight : 17,2 kg
- Dimensions: 712 x 407 x 1698 mm
- Maximum door size : 1200 x 150 x 2300 mm
- Load capacity : 100 kg



### B-1-00202

Safety strap

- Weight : 0,55 kg
- Length : 3 m



### B-1-00002

Loading board with universal wheel

- Weight : 2,2 kg
- Dimensions: 400 x 554 x 79 mm
- Load capacity : 170 kg



### B-1-00003

Gravity center adjusting system

- Weight : 5,2 kg
- Dimensions: 400 x 515 x 369 mm
- Load capacity : 170 kg



### C-2-00445

Charger 48V 4Ah



### B-1-00423

Lithium battery 48V 10Ah